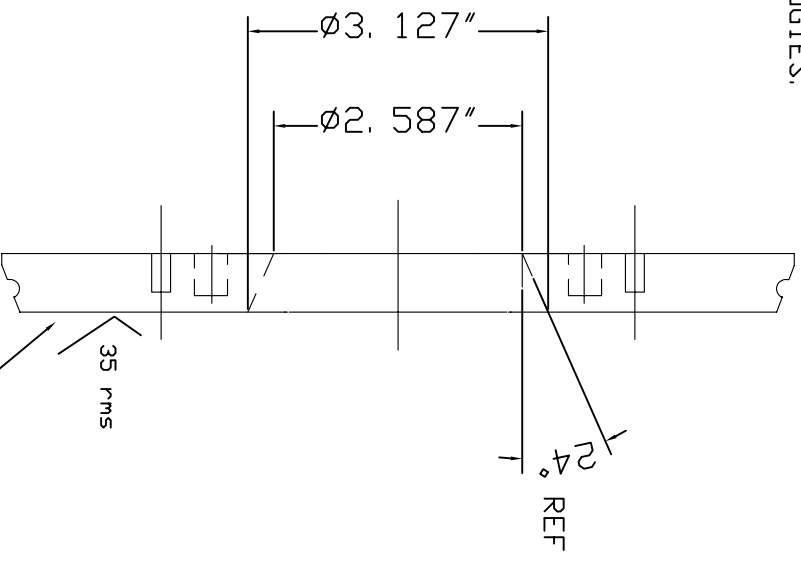
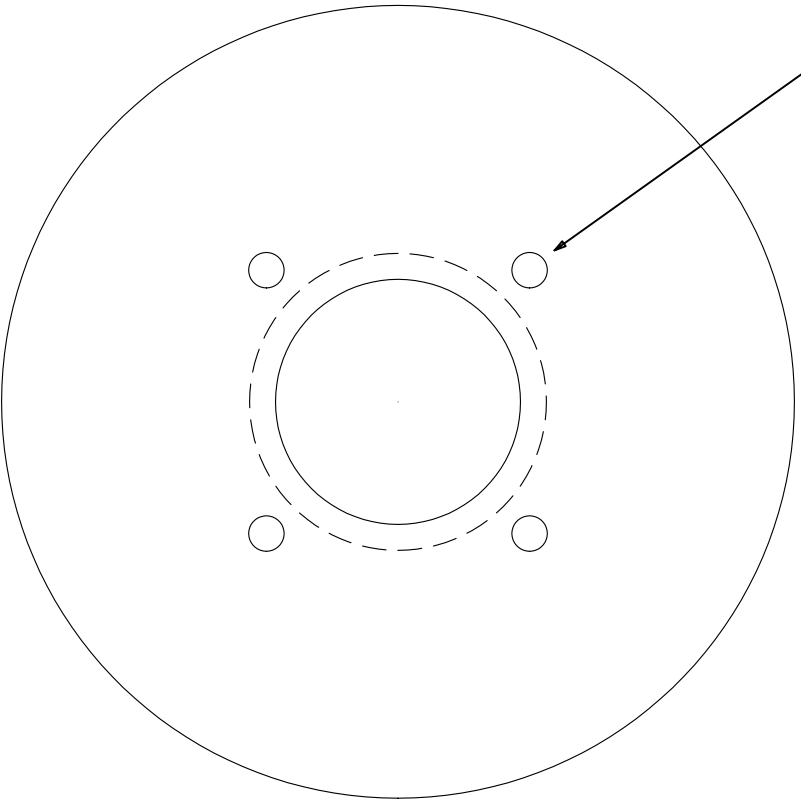


NOTE:

THIS IS PROPRIETARY. THIS MATERIAL IS CONFIDENTIAL, THIS DRAWING CONTAINS INFORMATION WHICH IS THE EXCLUSIVE PROPERTY OF ZM TECHNOLOGIES. POSSESSION OF THIS MATERIAL DOES NOT CONVEY OR TRANSFER ANY RIGHT THERE TO, AND ANY REPRODUCTION, USE, OR DISCLOSURE TO OTHERS IS FORBIDDEN WITHOUT THE EXPRESSED WRITTEN CONSENT OF AN OFFICER OF ZM TECHNOLOGIES.

1	REVISION
2	

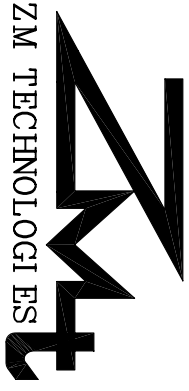


MACHINE TO SMOOTH FINISH

EQUIP - TRI-CLOVER

MODEL - 218, 328

B/M - 46, 251



DWG NO- T218BP

MAT'L - 316 SS

DATE - 5/19/94