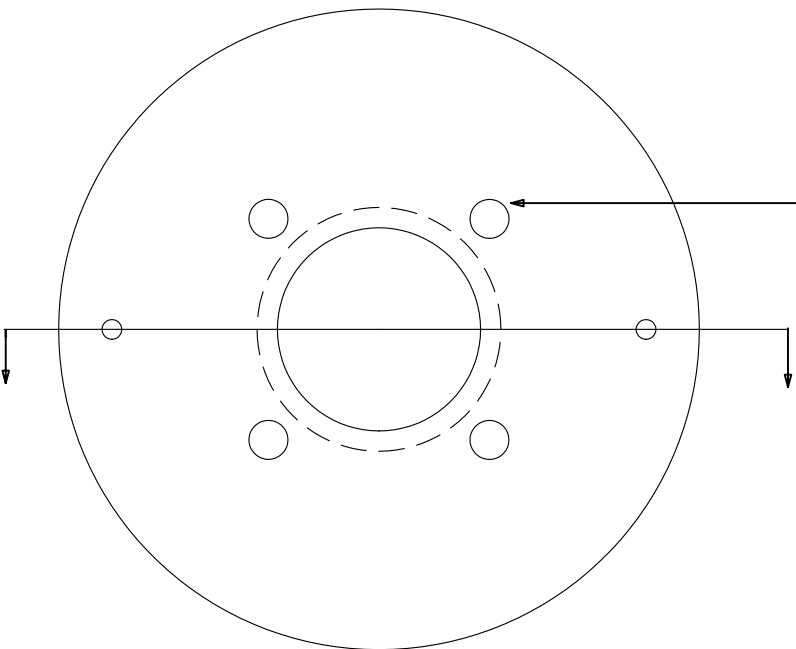
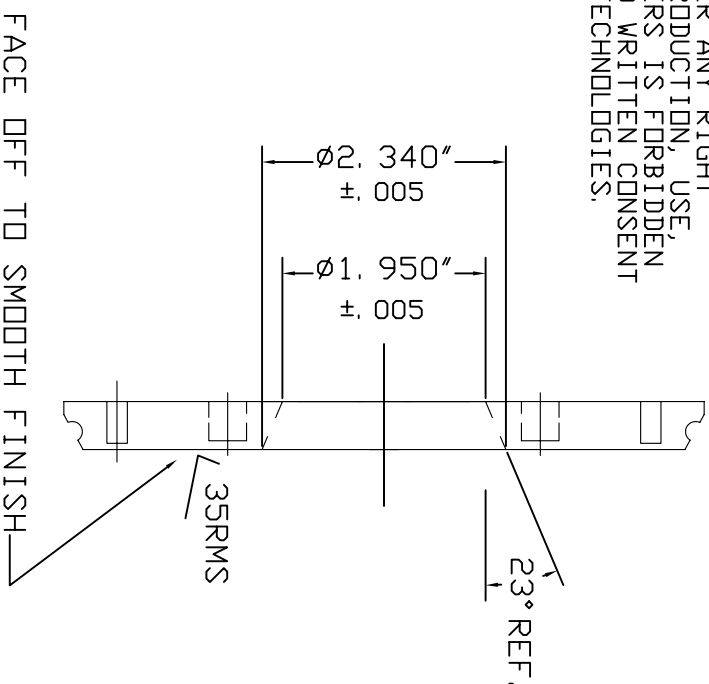


4ea 3/8-16 HOLES 3/8" DEEP DN 3.00 B. C.

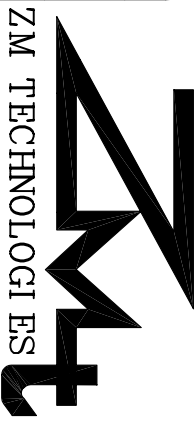


NOTE: THIS IS PROPRIETARY. THIS MATERIAL IS CONFIDENTIAL, THIS DRAWING CONTAINS INFORMATION WHICH IS THE EXCLUSIVE PROPERTY OF ZM TECHNOLOGIES. POSSESSION OF THIS MATERIAL DOES NOT CONVEY OR TRANSFER ANY RIGHT THERETO, AND ANY REPRODUCTION, USE, OR DISCLOSURE TO OTHERS IS FORBIDDEN WITHOUT THE EXPRESSED WRITTEN CONSENT OF AN OFFICER OF ZM TECHNOLOGIES.



REVISION	1
	2

EQUIP - TRI-CLOVER
 MODEL - SP/C 216
 B/M - 43, 251



DWG NO-T216BPE
 MAT'L - 316 SS
 DATE - 12/31/93